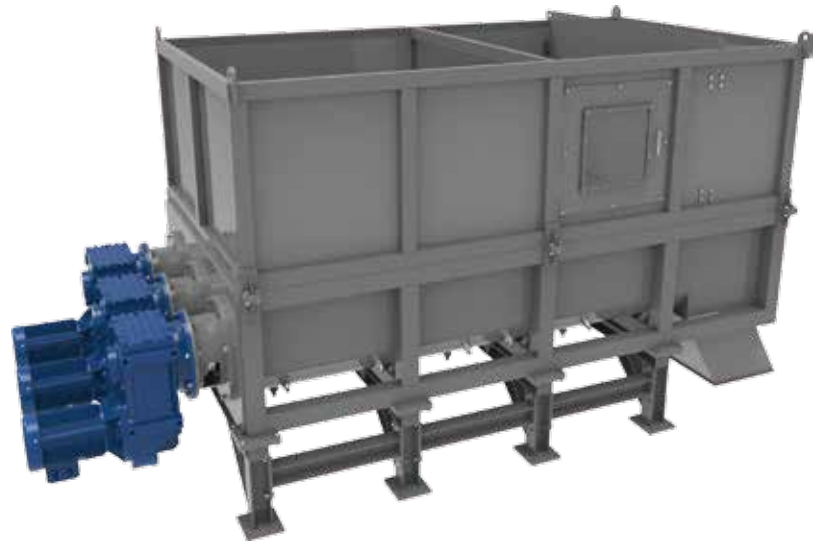


扎装塑料高效强力解包技术

Efficient Plastic Bale  
Breaking Technology



## 解包机 Bale Breaker

解包机用于解散塑料瓶砖, 主要用于 PET 瓶回收。一般情况下, 先通过人工将 PET 瓶砖的铁丝剪断, 瓶砖经由输送皮带机或链板机传送到解包机, 经过解包机轴的高速运转打散瓶砖使其处于疏松状态以便进入下一环节进行处理。宝绿特解包机可搭配自动剪铁丝装置, 免去人工作业。

Bale breaker is applied to PET bottle recycling industry to break up PET bottle bales. Normally, cutting wires of PET bottle bale by labor in the first step, then PET bottle bales will be transported to bale breaker shafts via belt conveyor or chain conveyor. PET bottle bales will broke into loose bottles under the function of powerful rolling paddles. De-wiring can be equipped on bale breaker instead of manual operation.

宝绿特根据不同地区 PET 瓶砖尺寸及打包密度等特性, 研发了立式及卧式两种形态的解包机, 瓶砖处理量最大可达 10000 kg/h。解包机轴采用碳钢铸造, 叶片采用高强度钢, 可拆卸, 方便日常维护保养。

宝绿特解包机分为双轴, 三轴和四轴驱动三种可供选择。配套进料皮带输送可变频, 防止解包卡死现象。三轴解包机特别适用于高密度瓶砖。设备操作工艺简单, 低能耗, 少人工。

There are two types (Horizontal & Vertical De-baler) of bale breakers developed by BoReTech. Its input capacity reaches up to 10000 kg/h regarding dimension and materials conditions of PET bottle bales. Baler breaker shaft adopts carbon steel and paddles is made from alloy steel, it is dismountable and friendly to daily maintenance.

3 specialised types of bale breakers including two shafts, three shafts and four shafts are available for different process design. The speed of feeding conveyor is controlled by inverter it is better to avoid material clogging. Bale breaker with three shafts is particularly easy to de-baling high density bottle bales. Bale breaker by BoReTech is simple to operate, running with low power consumption and less manpower.

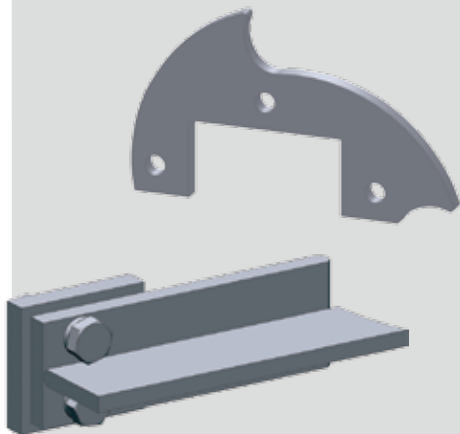
### 备件 Spare Parts

#### 叶片

#### Paddles

使用寿命: 1年/10,000吨产出

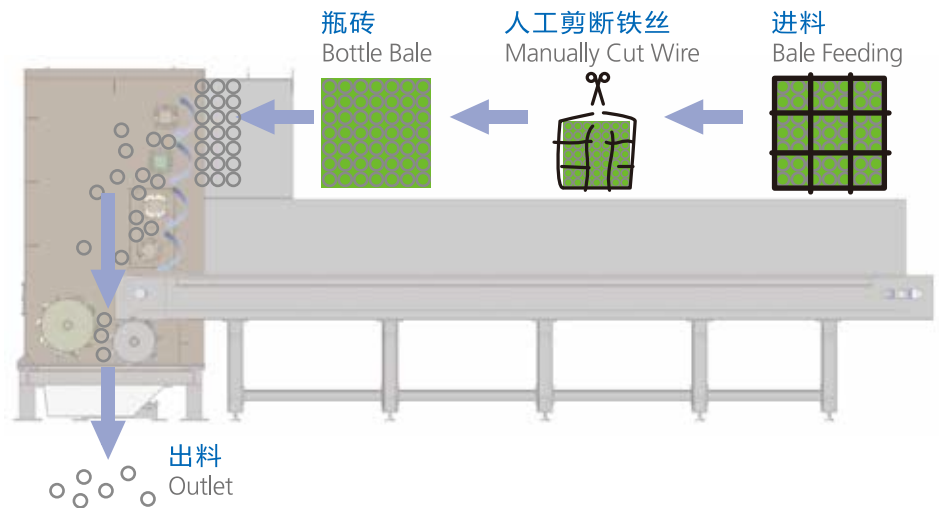
Service life: One Year/10,000 Tons output



### 运行示意图 Operation Process

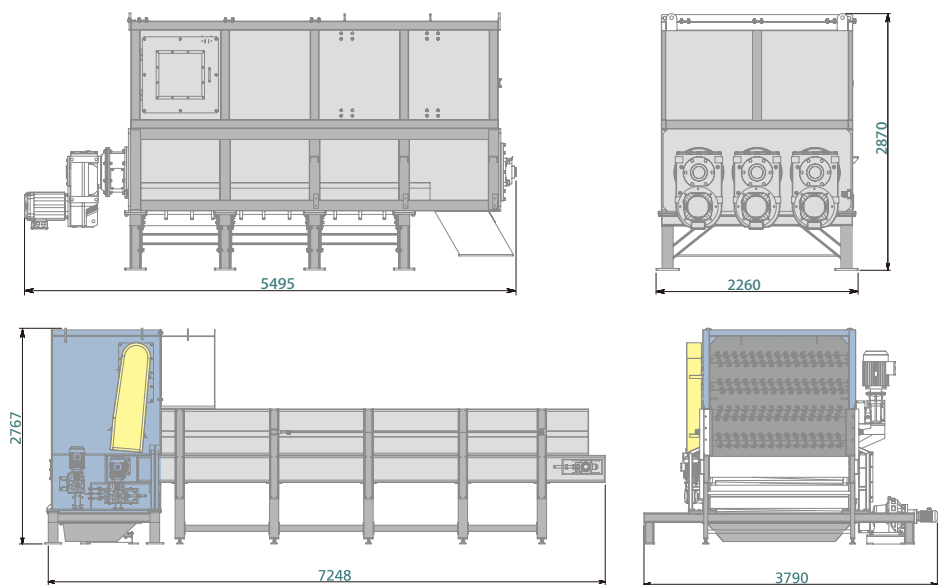
\*卧式解包机 (XJB 系列) 运行示意图

\*Horizontal Bale Breaker (XJB Series) Operation Process



### 外观尺寸图 Dimensions

WJB1800 / XJB1800



### 参数表 Parameters

型号 Model	单位 Unit	处理量 Capacity	功率 Power	外形尺寸 Dimensions
		(kg/h)	(kW)	(mm)
<b>JB1300</b>		1500 / 3000	11x2	1690 x 800 x 3864
<b>WJB1400</b>		3000 / 6000	15x2	2803 x 2260 x 3804
<b>XJB1800</b>		>6000	15+4+2.2x2	7248 x 3790 x 2767
<b>WJB1800</b>		>6000	15x3	5495 x 2260 x 2870

\*解包处理量受瓶砖打包密度影响

\*Capacity will be affected by PET bale packing density